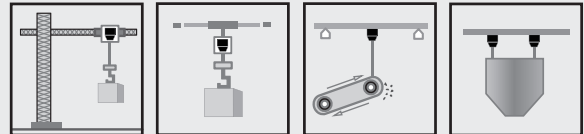
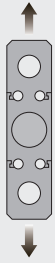


Type BH Load Cell

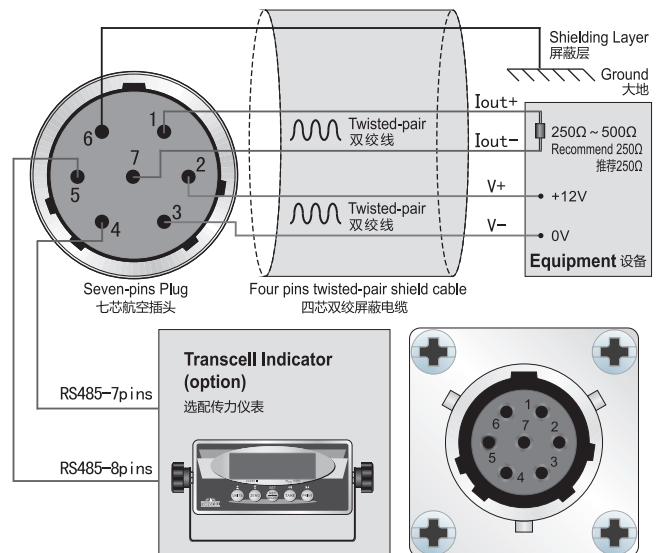
40t~160t



Features 主要特点

- Senior alloy steel
- High accuracy
- High stability
- High protection class
- 0 ~ 20mA output / RS485 signal output (option)
- Easy to install
- Use in tough industrial environment
- Suitable for hook scales, hopper scales, packing scales and overload limiter, etc.
- 优质合金钢材质
- 高精度
- 高稳定性
- 高保护等级
- 0 ~ 20mA电流输出/RS485信号输出(可选)
- 安装简便、快速
- 可用于恶劣的工业环境
- 适用于吊钩秤、料斗秤、配料秤以及过载保护

Schematic 接线方式

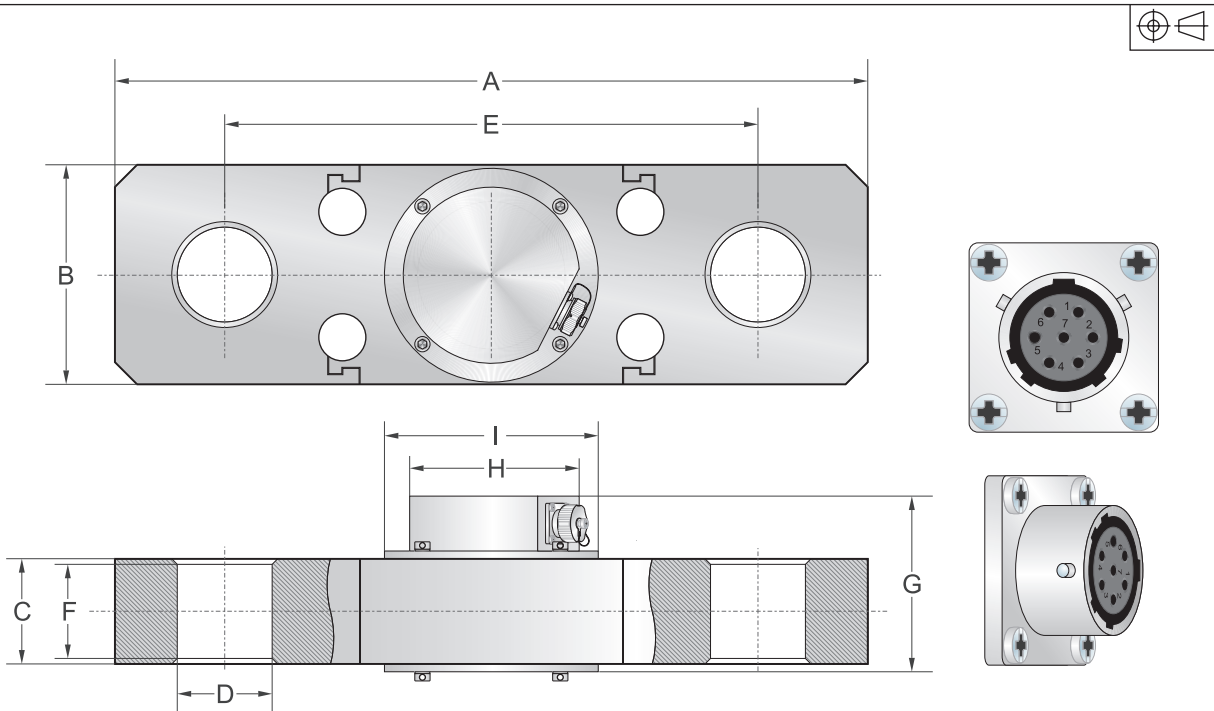


Capacities 量程

40t, 60t, 100t, 130t, 160t

“S” Type Series

Dimensions 尺寸



Capacity/量程		A	B	C	D	E	F	G	H	I
40t	mm	480	140	67	2×Ø60.5	340	60	112	Ø112	Ø136
60t	mm	520	160	87	2×Ø70.5	360	80	132	Ø112	Ø136
100t	mm	580	180	90	2×Ø65	360	83	135	Ø116	Ø144
130t	mm	580	180	90	2×Ø71	360	83	135	Ø126	Ø154
160t	mm	740	200	110	2×Ø100.5	500	103	155	Ø136	Ø164

“S” Type

Specification 技术参数

Rated Output	额定输出	0~20mA output / RS485 signal output (option)
Creep after 30 minutes	蠕变	±0.3% of rated output
Nonlinearity	非线性	±0.3% of rated output
Hysteresis	滞后	±0.25% of rated output
Repeatability	重复性	±0.2% of rated output
Temp. effect on output	灵敏度温漂	≤0.02% of applied output/°C
Temp. effect on zero	零点温漂	≤0.02% of rated output/°C
Safe Temp. Range	可用温度范围	-40°C to + 70°C
Temp. Compensated	温度补偿范围	-10°C to + 40°C
Safe Overload	安全载荷	150%
Ultimate Overload	极限载荷	300%
Input Impedance	输入阻抗	387 ohm ± 20 ohm
Rated Excitation	推荐激励电压	12V DC
Maximum Excitation	最大激励电压	15V DC
Cable Type	导线类型	7 pins connector (7芯航空接头)